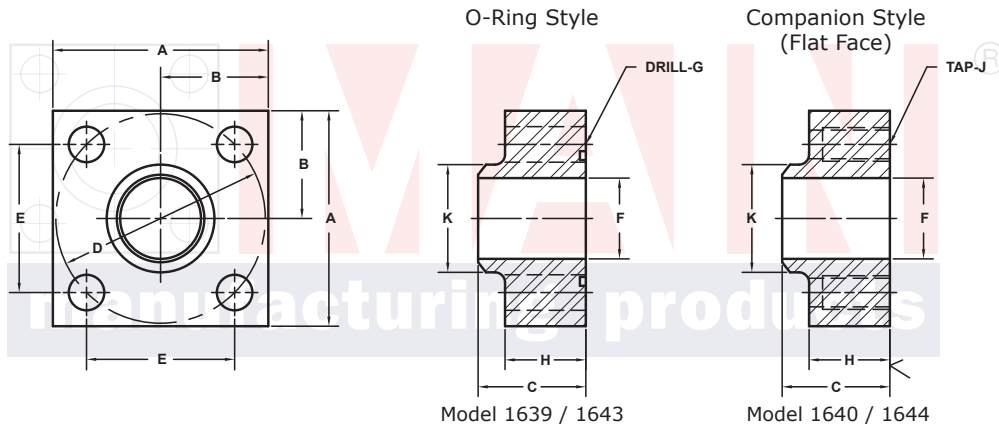


# BUTT WELD IN-LINE FLANGES

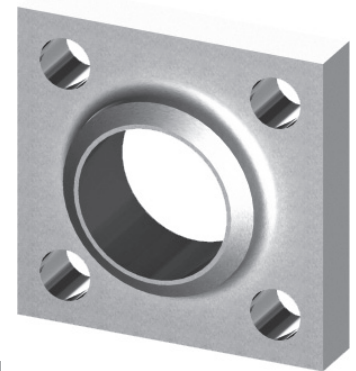
For Schedule 80 Pipe ©

ISO 6164 BOLT PATTERN										250 BAR SERIES					WT																															
FLANGE SIZE	PIPE SIZE	PART NUMBER	A	B	C	Dmm	E	F	Gmm		H	K	MOUNTING KIT®																																	
									Jmm				PART NO.	SCREW SIZE	O-RING																															
<b>10</b>	<b>3/8</b>	1639-06-06M	4.00	2.00	2.25	98	2.728	1.94	17.5	M16x2	1.60	2.50	MKM 3531	M16 x 65	228	5.7																														
		1640-06-06M											-----	---																																
<b>13</b>	<b>1/2</b>	1639-08-08M							4.75	2.38	2.50	118	3.285	2.32	22.0	M20x2.5	1.88	3.00	MKM 5573	M20 x 80	232	9.0																								
		1640-08-08M																	-----	---																										
<b>19</b>	<b>3/4</b>	1639-12-12M													5.50	2.75	3.00	145	4.037	2.90	22.0	M20x2.5	2.28	3.50	MKM 5558	M20 x 90	237	14.8																		
		1640-12-12M																							-----	---																				
<b>25</b>	<b>1</b>	1639-16-16M																			5.50	2.75	3.00	145	4.037	2.90	22.0	M20x2.5	2.28	3.50	MKM 5558	M20 x 90	237	14.8												
		1640-16-16M																													-----	---														
<b>32</b>	<b>1 1/4</b>	1639-20-20M																									5.50	2.75	3.00	145	4.037	2.90	22.0	M20x2.5	2.28	3.50	MKM 5558	M20 x 90	237	14.8						
		1640-20-20M																																			-----	---								
<b>38</b>	<b>1 1/2</b>	1639-24-24M																															5.50	2.75	3.00	145	4.037	2.90	22.0	M20x2.5	2.28	3.50	MKM 5558	M20 x 90	237	14.8
		1640-24-24M																																									-----	---		
<b>51</b>	<b>2</b>	1639-32-32M	5.50	2.75	3.00	145	4.037	2.90																															22.0	M20x2.5	2.28	3.50	MKM 5558	M20 x 90	237	14.8
		1640-32-32M																																									-----	---		

PLEASE USE THE 400 BAR SERIES FOUND BELOW. THE BLOCK SIZE, BOLT PATTERN AND THE O-RING ARE IDENTICAL IN FLANGE SIZES 10 - 38. IF YOU HAVE ANY QUESTIONS PLEASE CALL ENGINEERING AT 1-800-521-7918.



MATERIAL:  
**Low Carbon Steel**



3181 TRI-PARK DR. GRAND BLANC, MI 48439 800-521-7918 810-953-1380 FAX 810-953-1385 INFO@MAINMFG.COM

ISO 6164 BOLT PATTERN										400 BAR SERIES					WT	
FLANGE SIZE	PIPE SIZE	PART NUMBER	A	B	C	Dmm	E	F	Gmm		H	K	MOUNTING KIT®			
									Jmm				PART NO.	SCREW SIZE	O-RING	
<b>10</b>	<b>3/8</b>	1643-06-06M	1.50	.75	1.00	35	.974	.42	6.5	M6x1	.73	.68	MKM 5546	M6 x 30	115	.5
		1644-06-06M											-----	---		
<b>13</b>	<b>1/2</b>	1643-08-08M	1.75	.88	1.12	42	1.170	.53	9.0	M8x1.25	.81	.88	MKM 512	M8 x 35	210	.7
		1644-08-08M											-----	---		
<b>19</b>	<b>3/4</b>	1643-12-12M	2.00	1.00	1.25	50	1.392	.75	9.0	M8x1.25	.90	1.12	MKM 5559	M8 x 35	214	1.0
		1644-12-12M											-----	---		
<b>25</b>	<b>1</b>	1643-16-16M	2.50	1.25	1.50	62	1.726	.94	11.0	M10x1.5	1.00	1.38	MKM 503	M10 x 40	219	1.5
		1644-16-16M											-----	---		
<b>32</b>	<b>1 1/4</b>	1643-20-20M	3.00	1.50	1.75	73	2.032	1.25	13.5	M12x1.75	1.20	1.75	MKM 1502	M12 x 50	222	2.5
		1644-20-20M											-----	---		
<b>38</b>	<b>1 1/2</b>	1643-24-24M	3.50	1.75	2.00	85	2.366	1.50	17.5	M16x2	1.44	2.00	MKM 515	M16 x 60	225	4.0
		1644-24-24M											-----	---		
<b>51</b>	<b>2</b>	1643-32-32M	4.00	2.00	2.25	98	2.728	1.94	17.5	M16x2	1.60	2.50	MKM 5560	M16 x 65	331	5.7
		1644-32-32M											-----	---		
<b>56</b>	<b>2 1/2</b>	1643-40-40M	4.75	2.38	2.75	118	3.285	2.32	22.0	M20x2.5	1.98	3.00	MKM 5538	M20 x 80	335	9.5
		1644-40-40M											-----	---		
<b>63</b>	<b>3</b>	1643-48-48M	6.00	3.00	3.00	145	4.037	2.62	26.0	M24x3	2.12	3.50	MKM 5561	M24 x 90	337	17.2
		1644-48-48M											-----	---		
<b>70</b>	<b>3 1/2</b>	1643-56-56M	6.50	3.25	3.50	160	4.454	2.73	26.0	M24x3	2.46	4.00	MKM 5562	M24 x 100	340	25.0
		1644-56-56M											-----	---		
<b>80</b>	<b>4</b>	1643-64-64M	7.00	3.50	4.00	175	4.872	3.15	33.0	M30x3.5	2.85	4.50	MKM 5563	M30 x 120	341	31.5
		1644-64-64M											-----	---		

① Order Separately

© Other Pipe and Tube Sizes are Available

NOTE: Dimensions are in Inches Unless Otherwise Noted.

© Copyright MAIN Mfg. 2017