



How to use this *Quick Reference Guide*

Purpose

It is impractical to catalog every flange that MAIN Manufacturing Products has made over the years, as well as the thousands of special flanges on our shelves. Because special hydraulic flanges as well as standard are the forte of our company and often our customers cannot take the time to draft their requirements, this Quick Reference brochure has been created to assist in determining the best possible flange configuration.

Use

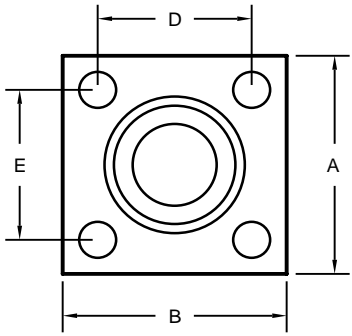
Scan the various frames and after deciding which is closest to your requirement, decide the parameters and call our toll-free number **800-521-7918** (in Michigan, please call 810-953-1380). If you don't know exactly what is required or available, call and our engineers will assist you.

By referring to the frame number and discussing the problem, our engineers will be able to develop the exact flange to fit your requirements. **On this version many of the pictures have links to an index or directly to a catalog page or pages. Simply click the mouse on the link and you will go to the index or catalog pages. PLEASE NOTE: Catalog pages are constantly being produced. If the page is not here please call.**

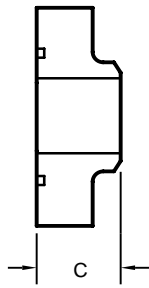
Materials

Flanges can be quoted in carbon steel, stainless steel, monel, aluminum or any other commercially available material.

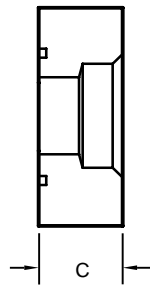
SAE & SQUARE IN-LINE FLANGES



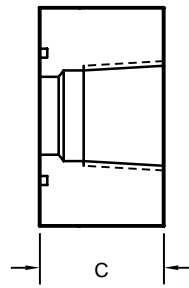
AVAILABLE IN BOTH
O-RING & FLAT FACED



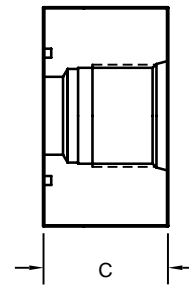
BUTT WELD
65-1A



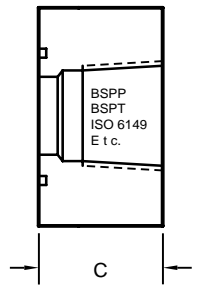
SOCKET WELD
65-1B



N P T F
65-1C

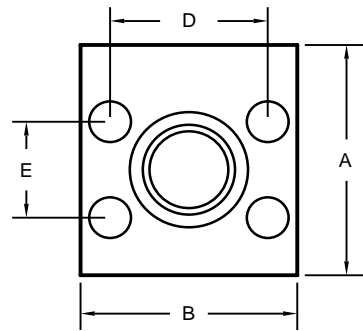


SAE O-RING BOSS
65-1D

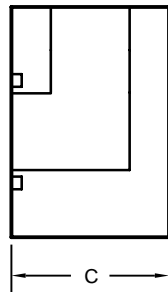


OTHER
65-1E
BSPP
BSPT
ISO 6149
E t c.

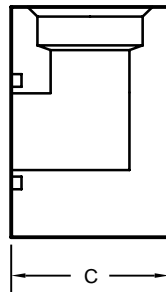
SAE & SQUARE ELBOW FLANGES



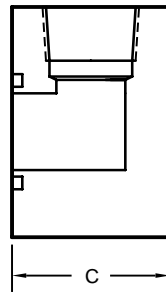
AVAILABLE IN BOTH
O-RING & FLAT FACED



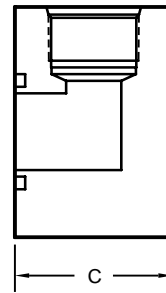
FLANGED
65-2A



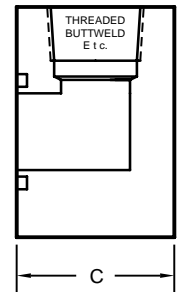
SOCKET WELD
65-2B



N P T F
65-2C

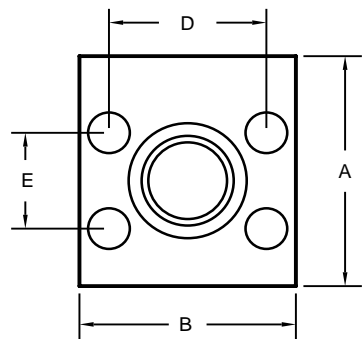


SAE O-RING BOSS
65-2D

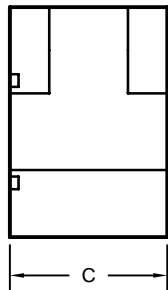


OTHER
65-2E
THREADED
BUTT WELD
E t c.

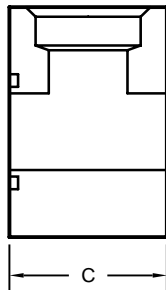
SAE & SQUARE RUN TEE FLANGES



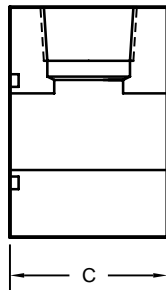
AVAILABLE IN BOTH
O-RING & FLAT FACED



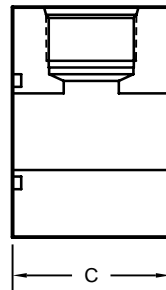
FLANGED
65-3A



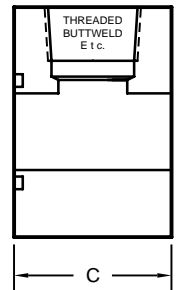
SOCKET WELD
65-3B



N P T F
65-3C

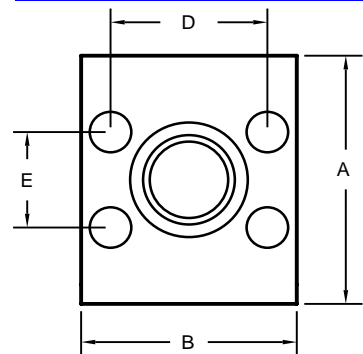


SAE O-RING BOSS
65-3D

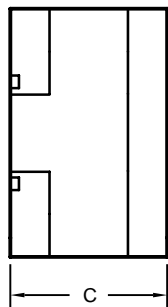


OTHER
65-3E
THREADED
BUTT WELD
E t c.

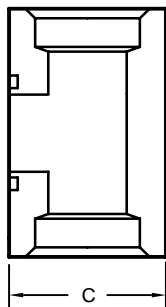
SAE & SQUARE BRANCH TEE FLANGES



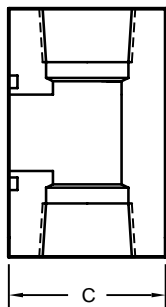
AVAILABLE IN BOTH
O-RING & FLAT FACED



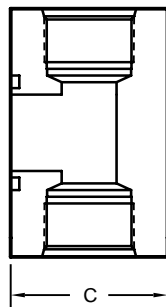
FLANGED
65-4A



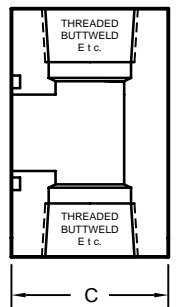
SOCKET WELD
65-4B



N P T F
65-4C

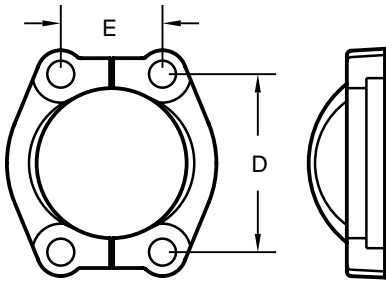


SAE O-RING BOSS
65-4D



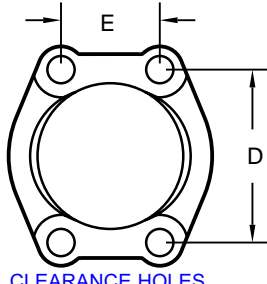
OTHER
65-4E
THREADED
BUTT WELD
E t c.

SPLIT FLANGES

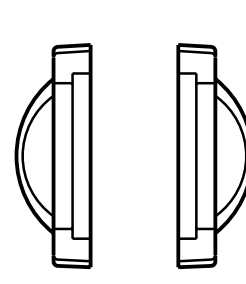


65-5

FLANGED CLAMPS



CLEARANCE HOLES
65-6A



TAPPED HOLES
65-6B

CONNECTOR PLATES & COVERS

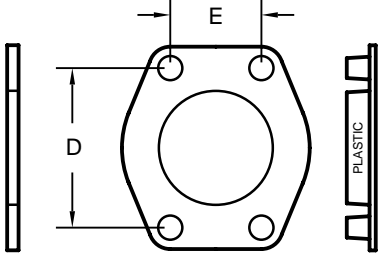
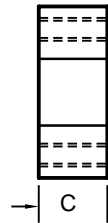
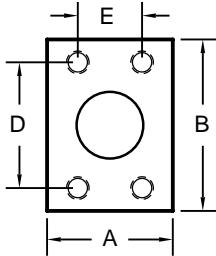


PLATE
65-7A

COVER
65-7B

CONNECTOR BLOCKS & RESERVOIR ADAPTERS



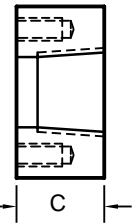
BLOCK
65-8A



PLAIN RA
65-8B

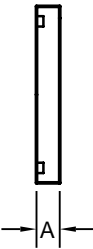
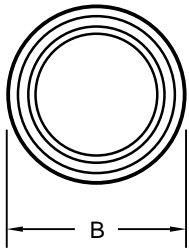


SW RA
65-8C

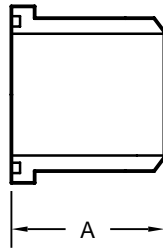


THREADED RA
65-8D

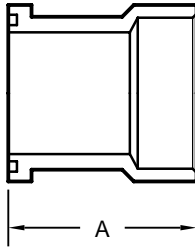
FLANGED PLUGS & HEADS



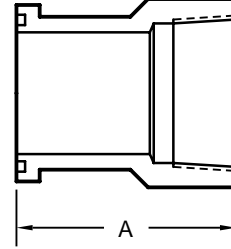
PLUG
65-9A



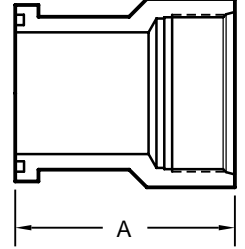
BUTT WELD
65-9B



SOCKET WELD
65-9C

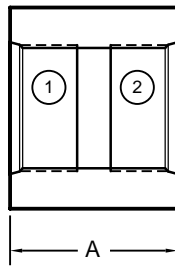
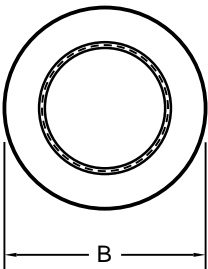


NPTF
65-9D

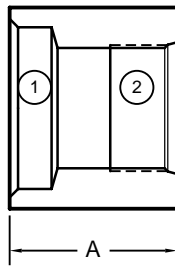


SAE O-RING BOSS
65-9E

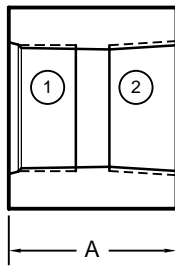
COUPLINGS



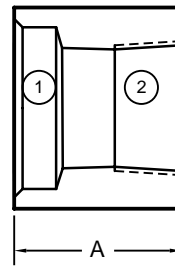
ORB x ORB
65-10A



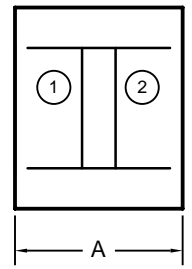
SW x ORB
65-10B



ORB x NPTF
65-10C

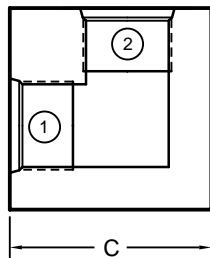
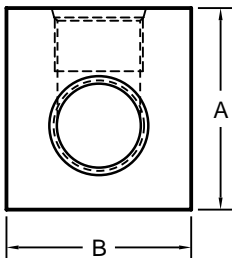


SW x NPTF
65-10D

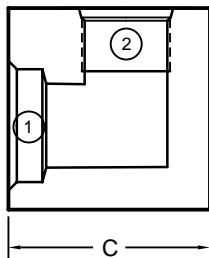


??? x ???
65-10E

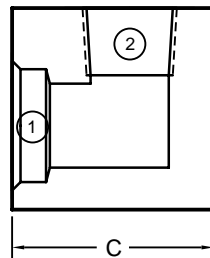
ELBOWS



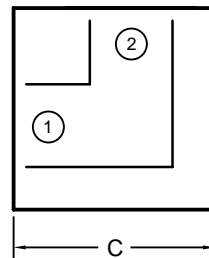
ORB x ORB
65-11A



SW x ORB
65-11B

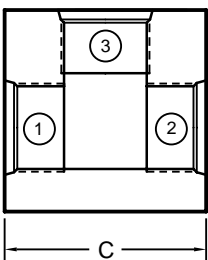
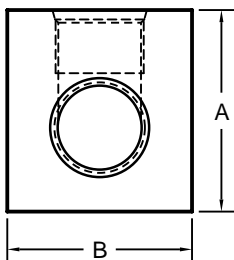


SW x NPTF
65-11C

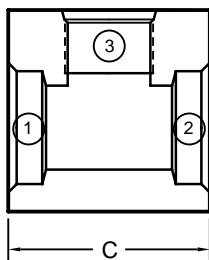


??? x ???
65-11D

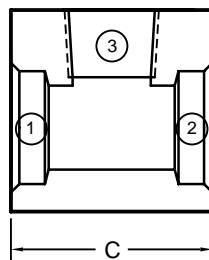
TEES



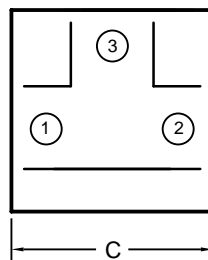
ORB x ORB x ORB
65-12A



SW x SW x ORB
65-12B

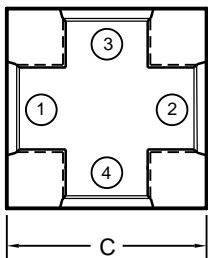
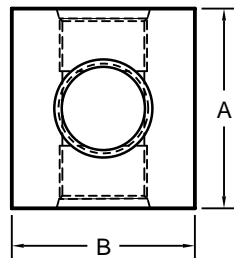


SW x SW x NPTF
65-12C

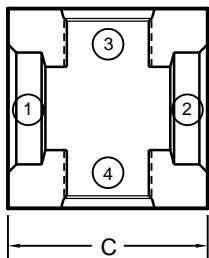


??? x ??? x ???
65-12D

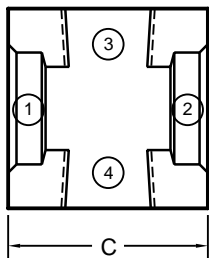
CROSSES



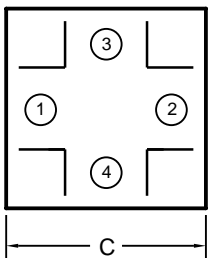
ORB x ORB x ORB x ORB
65-13A



SW x SW x ORB x ORB
65-13B

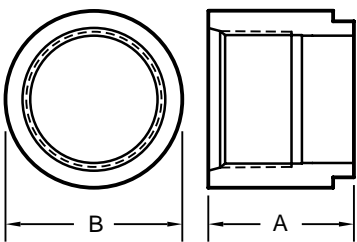


SW x SW x NPTF x NPTF
65-13C



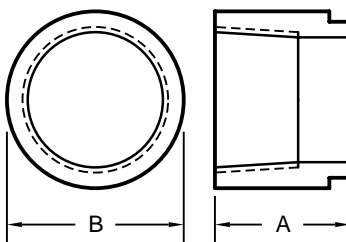
??? x ??? x ??? x ???
65-13D

SAE O-RING BOSS TANK PORTS



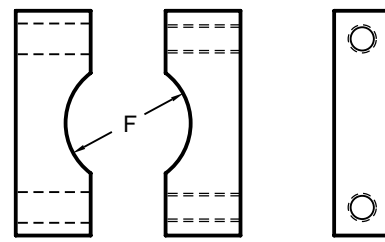
65-14

NPTF TANK PORTS



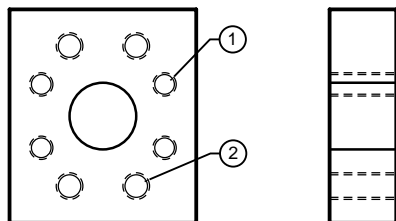
65-15

PIPE & TUBE CLAMPS



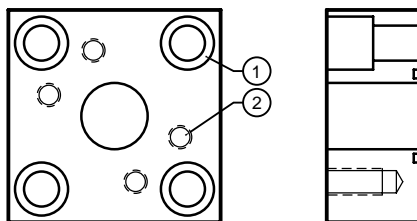
65-16

FLANGE ADAPTERS



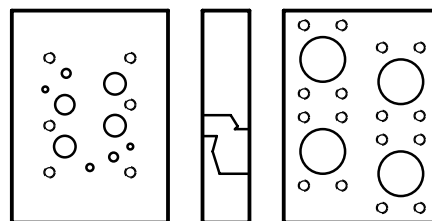
65-17

FLANGE ADAPTERS



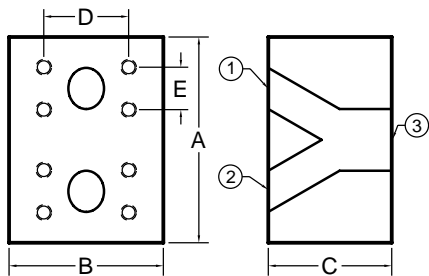
65-18

FLANGED SUBPLATES



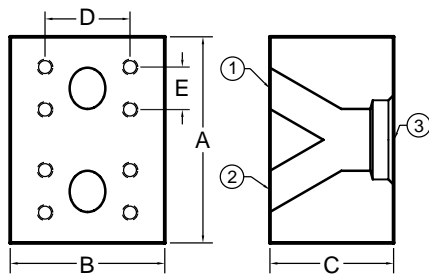
65-19

WYE FLANGES



65-20

WYE FLANGES



65-21